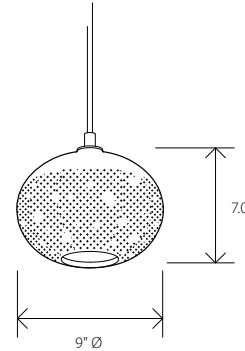


Bubble Pendant, Large Ellipse



Opaline Bubble



Dimensions*: 9.0" Ø, 7.0" H
 Materials: glass, metal
 Product weight*: 5.5 lbs
 Light source: medium base E26 socket**
 Lamping: E26 base, G25 lamp, 40 W max, 250 V AC max
 Round canopy with cloth covered SJT-3 Cable
 Canopy dimensions: 5" Ø, 0.3"
 Field adjustable drop length: 0'6" min - 6'0" max
 Canopy finish matches Metal Finish
 Suitable for sloped ceilings
 UL listed for damp locations



Grey Bubble



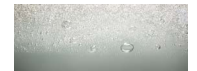
Clear Bubble



clear bubble (GL-129)



opaline bubble (GL-249)



grey bubble (GL-244)



satin nickel



brushed brass



dark bronze



black

MATERIAL & FINISH OPTIONS

Bubble Large Ellipse part # S06-3015-

Glass Finish

- clear bubble (GL-129) 129
- opaline bubble (GL-249) 249
- grey bubble (GL-244) 244

Metal Finish

- satin nickel SN
- brushed brass SB
- dark bronze BZ
- black BK

Cord Color

- black cloth BC
- taupe cloth TC
- silver cloth SC

Lamping

- no bulb 00
- G25 LED bulb included - 2700 K, 90 CRI, 3.8 W, 350 lumens, 120 V AC MB



These works continue the language of contrast of the lattimo and banded lines, but use a swath of textured whipped glass. This is then paired with a selection of soft colors and simple forms. The bubbles cloud and diffuse the bulb and add elements of patterning on nearby surfaces. Hand blown and shaped in lead free crystal. No molds are used, and each glass shape is unique. Designed and made by Siemon & Salazar in California. Signed.

* Each piece of hand-blown glass is a unique work of art. Dimensions, weight, and color will vary. When multiple fixtures are installed next to each other, expect some variation in shape and color.

** Alternate voltages and socket types are available upon request.

